

INDIVIDUALS SERVED

18,415

attended presentations
or workshops

24,822

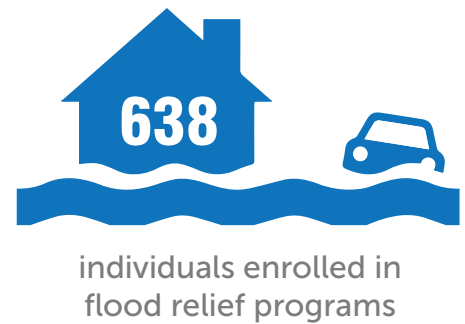
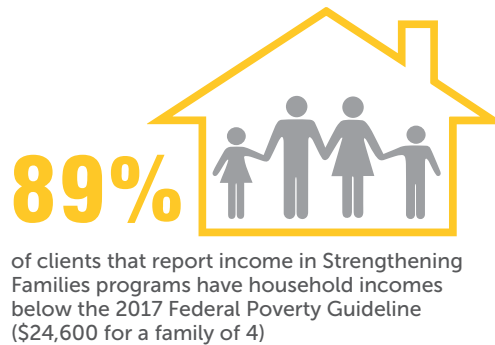
served at food fairs

5,843

Christmas
Program*

39,882

served through individual
program services



PROGRAM HIGHLIGHTS

CHILDREN



268

children served in St. Michael's
Homes for Children



686

individuals received pregnancy
and parenting services



244

individuals received postadoption
counseling services and assistance



101

children received
in-school counseling

FAMILIES



24,822

individuals served through our
monthly food fairs



800

clients attended counseling
sessions



2,457

individuals received assistance to
maintain housing/utilities



638

individuals received disaster
case management

REFUGEES & IMMIGRANTS



751

refugees increased their self-
sufficiency through employment



28,783

immigrants received support
services



10,800

individuals attended citizenship
workshops or outreach events



4,932

immigration petitions filed

SENIORS, VETERANS & OTHERS



351

seniors remained living
independently in the
community



22,047

meals enjoyed by 543 seniors



302

individuals enrolled in the HIV/
AIDS ministry program



687

women veterans and their
dependents enrolled in programs

FY 2017 Financial Highlights

Fiscal Year ended June 30, 2017
(unaudited)

REVENUE

	2016-17
Government grants	\$26,715,531
Foundation grants and other contributions	8,718,847
Archdiocesan contribution	929,100
United Way allocation	1,538,627
Special events, net of direct donor benefits	1,479,024
Program service fees and other	689,156
Investment return	<u>216,065</u>

TOTAL REVENUE \$40,286,350

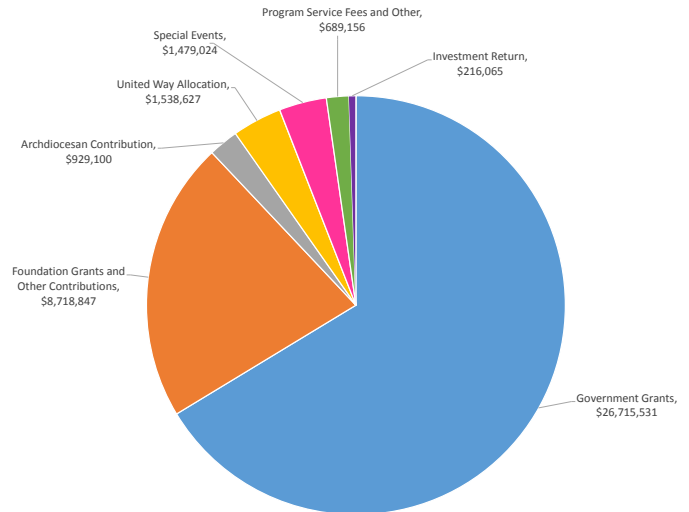
EXPENSES

	2016-17
PROGRAM SERVICES	
Children and Family Services	\$3,687,496
Community Outreach	7,086,680
Parish Relations and Advocacy	182,729
Immigration and Refugee Services	21,146,292
Disaster Relief and Response	310,157
Seniors and Adults Services	<u>2,801,281</u>
Total Program Services	<u>\$35,214,635</u>

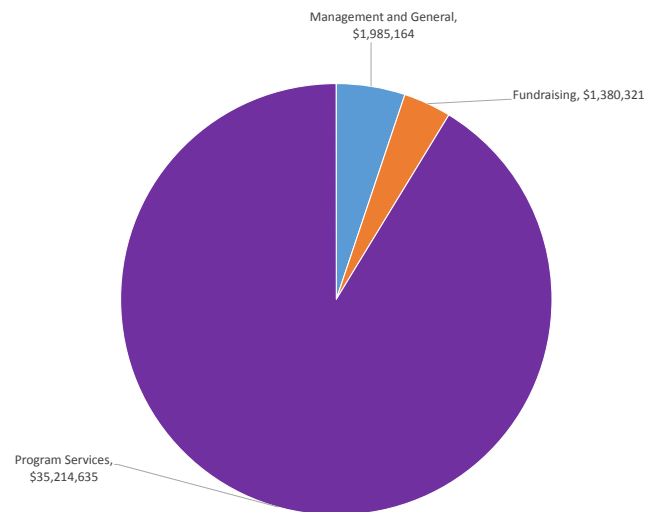
SUPPORTING SERVICES	
Management and General	\$1,985,164
Fundraising	<u>1,380,321</u>
Total Supporting Services	<u>3,365,485</u>

TOTAL EXPENSES \$38,580,120

SOURCES OF SUPPORT: \$40,286,350



EXPENSES BREAKDOWN: \$38,580,120



EXPENDITURES BY PROGRAM: \$35,214,635

