

## INDIVIDUALS SERVED

**18,415**

attended presentations  
or workshops

**24,822**

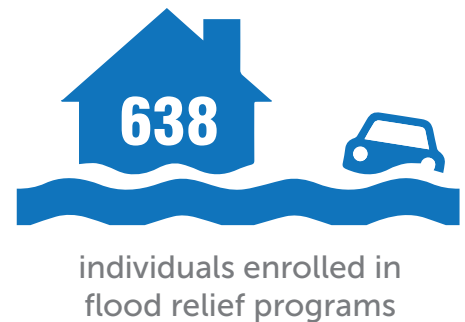
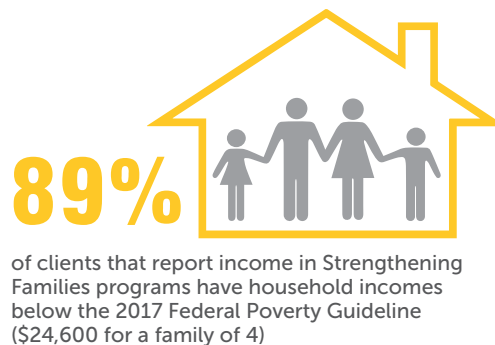
served at food fairs

**5,843**

Christmas  
Program\*

**39,882**

served through individual  
program services



## PROGRAM HIGHLIGHTS

### CHILDREN



**268**

children served in St. Michael's  
Homes for Children



**686**

individuals received pregnancy  
and parenting services



**244**

individuals received postadoption  
counseling services and assistance



**101**

children received  
in-school counseling

### FAMILIES



**24,822**

individuals served through our  
monthly food fairs



**800**

clients attended counseling  
sessions



**2,457**

individuals received assistance to  
maintain housing/utilities



**638**

individuals received disaster  
case management

### REFUGEES & IMMIGRANTS



**751**

refugees increased their self-  
sufficiency through employment



**28,783**

immigrants received support  
services



**10,800**

individuals attended citizenship  
workshops or outreach events



**4,932**

immigration petitions filed

### SENIORS, VETERANS & OTHERS



**351**

seniors remained living  
independently in the  
community



**22,047**

meals enjoyed by 543 seniors



**302**

individuals enrolled in the HIV/  
AIDS ministry program



**687**

women veterans and their  
dependents enrolled in programs

## FY 2017 Financial Highlights

Fiscal Year ended June 30, 2017  
(unaudited)

### REVENUE

Government grants	\$26,947,984
Foundation grants and other contributions	8,755,880
Contributions for capital campaign	0
Archdiocesan contribution	946,500
United Way allocation	1,682,468
Special events, net of direct donor benefits	992,795
Program service fees and other	728,564
Investment return	<u>232,153</u>
<b>TOTAL REVENUE</b>	<b><u>\$40,286,344</u></b>

### EXPENSES

<b>PROGRAM SERVICES</b>	
Children and Family Services	\$3,687,096
Community Outreach	7,083,663
Parish Relations and Advocacy	182,728
Immigration and Refugee Services	21,159,019
Disaster Relief and Response	310,061
Seniors and Adults Services	<u>2,801,252</u>
Total Program Services	<u>\$35,223,819</u>
<b>SUPPORTING SERVICES</b>	
Management and General	\$1,975,988
Fundraising	<u>1,380,299</u>
Total Supporting Services	<u>3,356,287</u>
<b>TOTAL EXPENSES</b>	<b><u>\$38,580,106</u></b>

### ASSETS

Cash and cash equivalents	\$5,437,743
Restricted cash - funds held for others	140,639
Government grants and accounts receivable	4,978,969
Pledges receivable, net	2,534,001
Prepaid expenses and other assets	377,876
Property and equipment, net	22,269,004
Investments, net	<u>1,693,073</u>
<b>TOTAL ASSETS</b>	<b><u>\$37,431,305</u></b>

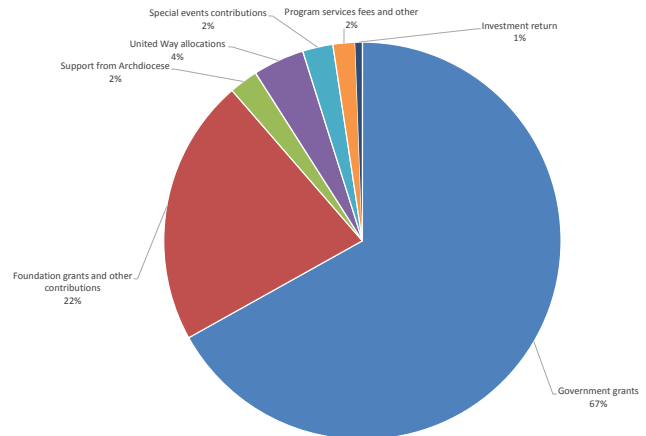
### LIABILITIES

Accounts payable	\$340,825
Accrued liabilities	563,274
Funds held for others	140,639
Refundable advances	0
Notes payable	<u>1,483,970</u>
Total Liabilities	<u>\$2,528,708</u>

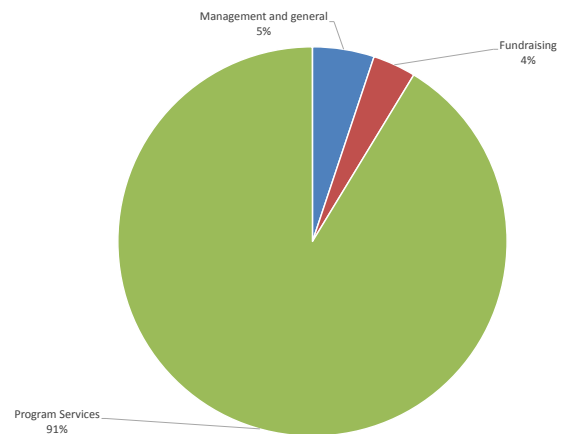
<b>NET ASSETS:</b>	
Unrestricted	\$30,198,493
Temporarily restricted	4,434,227
Permanently restricted	269,877
Total Net Assets	<u>\$34,902,597</u>

<b>TOTAL LIABILITIES &amp; NET ASSETS</b>	<b><u>\$37,431,305</u></b>
---	----------------------------

### SOURCES OF SUPPORT: \$40,286,344



### EXPENSES BREAKDOWN: \$38,580,106



### EXPENDITURES BY PROGRAM: \$35,223,819

